

Shade Cloth Colors



Pacific
Shade Sails

Shadeology
...the art of shade



EXTRABLOCK 330

SHADE FABRIC

EYE CATCHING
COLOURS AND FR
RATED OUTDOOR
SHADE



FABRIC SPECIFICATIONS

EXTRABLOCK 330

Shade Factor % (SF depends on colour - see below for details)		81 - 97
UVR Block %		96 - 98
UPF (UV Protection Factor)		21 - 41
Roll Width		3.0m
FRAS1530.2	Flammability 1, Spread Factor 0, Heat Factor 1	
FR AS1530.3	Ignitability 13, Spread of Flame 7, Heat Evolved 2, Smoke 5	
CSFM	Complies with California State Marshals requirements, Title 19, Section 1237	



Cream, Beige, Yellow and Red are not FR. Colours shown indicative only.

FEATURES



The EXTRABLOCK range of knitted shade fabric has been specifically designed for use in tension structures and shade sails, but performs equally well when used on carpark structures, awnings and umbrellas.

EXTRABLOCK is one of the worlds best FR rated shade cloths. It meets the California State Fire Marshall test for title 19. This is widely recognised as the most difficult FR test to meet and EXTRABLOCK gets a new certificate every year!

EXTRABLOCK is a very dimensionally stable shade cloth with very similar biaxial strengths and extensions in both directions.

EXTRABLOCK has a 12 year warranty against UV breakdown. Peace of mind for you and your clients.

- ✓ High Strength fabric
- ✓ Controlled Elongation
- ✓ Maximum protection with up to 98% shade
- ✓ Excellent Dimensional Stability
- ✓ 12 Year Warranty
- ✓ Fire retardancy rated
- ✓ Heat set (stentured)
- ✓ Will not rot or support the development of mould and mildew
- ✓ Breathable, allowing air circulation for cooling



ENGINEERING SPECIFICATIONS



Breaking Force Warp (AS2001.2.3.2-2001 Grab Method)	979N
---	-------------

Breaking Force Weft (AS2002.3.1-2001)	1228N
---	--------------

Elongation at Break Warp	67%
---------------------------------	------------

Elongation at Break Weft	57%
---------------------------------	------------

Bursting Strength (AS 2001.2.4-1990)	3000kPa
--	----------------

Tear Resistance Warp (AS2001.2.10-1986)	157N
---	-------------

Tear Resistance Weft (AS2001.2.10-1986)	170N
---	-------------

AS Standards

	Commercial 95 340	Commercial 95 340 FR
Performance		
Maximum force	warp 670 N/50mm	580 N/50mm
Elongation at max. force	warp 117%	98%
Maximum force	weft 2400 N/50mm	2000 N/50mm
Elongation at max. force	weft 83%	71.5%
Breaking force	warp 990 N	930 N
Breaking force	weft 2000 N	2000 N
Tear strength	warp 184 N	194 N
Tear strength	weft 347 N	282 N
Bursting pressure	3500 kPa	3600 kPa
Bursting force	1937 N	1944 N
Fabric Properties		
Nominal Fabric Mass	340 gsm ± 20	340 gsm ± 20
Roll Specification		
Width	3m (folded)	3m (folded)
Length	40m	40m
Flammability Info		
Flammability Index - 12	Flammability Index - 12	Flammability Index - 1
Ingnitability Index - 10	Ingnitability Index - 10	Ingnitability Index - 13
Spread of Flame Index - 7	Spread of Flame Index - 7	Spread of Flame Index - 8
Heat Evolved Index - 5	Heat Evolved Index - 5	Heat Evolved Index - 3
Smoke Developed Index - 4	Smoke Developed Index - 4	Smoke Developed Index - 6

ASTM Standards

	Commercial 95 340	Commercial 95 340 FR
Performance		
Maximum force	warp 189.1 lbf	158.6 lbf
Elongation at max. force	warp 103.67%	88.7%
Maximum force	weft 462.3 lbf	412.3 lbf
Elongation at max. force	weft 63%	49%
Breaking force	warp 52.2 lbf	43 lbf
Breaking force	weft 52.2 lbf	39.6 lbf
Tear strength	422 lbf	408 lbf
Fabric Properties		
Nominal Fabric Mass	340 gsm ± 20	340 gsm ± 20
Roll Specification		
Width	9 ft. 10 in. (folded)	9 ft. 10 in. (folded)
Length	131 ft. 3 in.	131 ft. 3 in.
Flammability Info		
ASTM E84 19B Class A	ASTM E84 19B Class A	CSFM Title 19 1237.1 NFPA 701 Test Methods 1&2 ASTM E84 19B Class A



Commercial NinetyFive

340 GSM | Standard & Flame Retardant

The most trusted
HDPE shade
fabric in the
industry.



Data provided in this brochure represents typical averages from independent testing and quality assurance testing and should not be taken as a minimum specification nor as forming any contract between GALE Pacific and another party. Due to continuous product improvement, refer to the GALE Pacific Commercial Fabrics website for the latest technical performance information.

Please note, due to limitations of the printing process, colors pictured may not represent the true color.



GALE Pacific ANZ

145 Woodlands Drive,
Braeside, Victoria 3195
Australia
Toll Free: +1 800 331 521
au.cs@galepacific.com

GALE Pacific AMERICAS

5311 77 Center Drive, Suite 150,
Charlotte, NC 28217
USA
Toll Free: +1 800 560 4667
cscommercial@galepacific.com

GALE Pacific MIDDLE EAST

JAFZA 15, 6th Floor, Room 604,
Jebel Ali Free Zone, Dubai
United Arab Emirates
+971 4 881 7114
cscommercial@galepacific.com

GALE Pacific ASIA

777 Hengshan W Road,
Beilun, Ningbo, Zhejiang 315800
China
Toll Free: +1 800 331 521
au.cs@galepacific.com

GALE Pacific EUROPE

Toll Free: +1 800 560 4667
csccommercial@galepacific.com

galecommercial.com

Architectural SHADE FABRIC

Tension Structures
Awnings
Shade Sails
Car Park Structures

Commercial NinetyFive

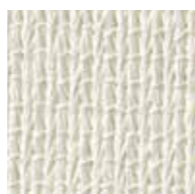
340 GSM | Standard & Flame Retardant

The cornerstone of the GALE Pacific portfolio, Commercial NinetyFive brings over 25 years of versatility, reliability, and unmatched UV protection.

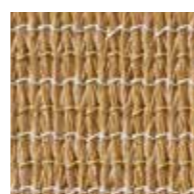
Free from lead and phthalates, Commercial NinetyFive is the first architectural shade fabric granted Oeko-Tex® 100 and Greenguard® certifications.



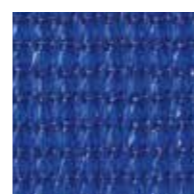
White
497736
495732



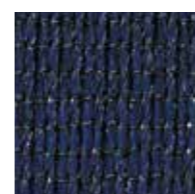
Natural
445003
495541



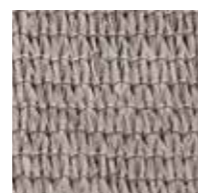
Desert Sand
444983
495565



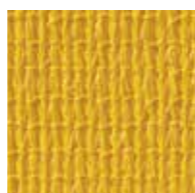
Aquatic Blue
444938
495671



Navy Blue
445010
495602



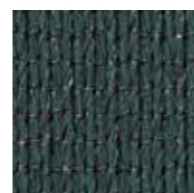
Driftwood
502294
502348



Yellow
445072
495619



Orange
459215
495633



Brunswick Green
444952
495572



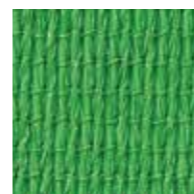
Rivergum
445027
495589



Cherry Red
444976
495695



Deep Ochre
444990
495688



Bright Green
459208
495596



Stone
502300
502355



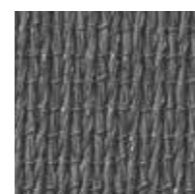
Bluebird
502263
502317



Aquamarine
502287
502331



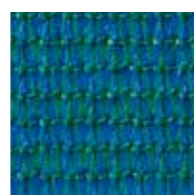
Steel Grey
445041
495718



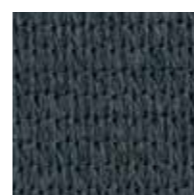
Gun Metal
455262
495527



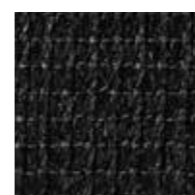
Sky Blue
445034
495626



Turquoise
445065
495664



Charcoal
444969
495558



Black
444945
495640

Expansive color assortment

Offering the most expansive color assortment of HDPE shade fabrics, Commercial NinetyFive ensures design accuracy with its precision-driven stentering process.

Effortless installation

Designed for longevity and ease, these maintenance-free shades have a best-in-class lay flat process for effortless installation.

Industry-leading UVR block

Each shade offers an industry-leading 96% UVR block with full warranties against UV degradation.

All colors meet the most tested regional flame retardancy standards, including CSFM & NFPA 701 (Methods 1 & 2), which ensures our fabrics can be used globally.



The beautiful palette of color combinations will enhance the design of any outdoor space.

Commercial DualShade 350FR

BRILLIANT COLLECTION

The fabric colors within this collection are rich and luminous combinations that demand to be noticed.

These fabrics glimmer in the sun's rays like a precious gemstone. Illuminate any outdoor space with a fabric from this collection.



Citrus



Citrus
491147
495992

Sunburst
492694
496067

Macaw
491154
496029

Chameleon
491116
495985

Topaz
492717
496074

TERRAFIRMA COLLECTION

The beauty and calmness of nature combine to form fabric colors that take you from lush rainforests to vast desert landscapes.

Experience the beauty of the land at its finest when choosing a fabric from this collection for your design.



Savanna



Amazonia
491123
495961

Savanna
492724
496050

Cobblestone
491178
496005

Gold Rush
491161
496012

DESTINATION COLLECTION

Elegant and clean hues combine to form fabrics that are reminiscent of some of the world's most desired destinations.

Inspired by the most alluring locations around the world, the fabric colors in this collection will transform any outdoor space into a beautiful oasis.



Maldives



Capri
491185
495978

Santorini
492700
496043

Maldives
491130
496036

Commercial DualShade 350 FR is a revolutionary architectural shade fabric designed and manufactured by GALE Pacific.

This fabric is truly unique in both its aesthetic and performance. Two different color yarns are combined to create a single fabric that produces a truly transformative effect.

Meets the most stringent Fire Standards for shade fabrics, including CSFM 1237.1 & NFPA 701 across all color variants providing premium biaxial stability, and tensile properties, for minimal maintenance, and improved fabric life.



Visit Dualshade350.com to see our transformative color combinations come to life!

Dimensionally stable fabric reduces retensioning frequency and associated maintenance costs, resulting in longer fabric life and improved performance

Maximum durability achieved through use of high quality, UV stabilized monofilament and tape yarns joined by a lock-stitch knit pattern

Patent pending dual color knit pattern creates a high performing fabric with a unique aesthetic

Superior long-term performance achieved through an even distribution of force across the tensioned fabric

Ideal for human sun protection offering up to 94% UV Block



Commercial
**DualShade®
350**

Commercial
**DualShade®
350FR**

—
**Where
performance
and function
meet design.**



**Architectural
SHADE FABRIC**

Sports Complexes
Office Buildings
Playgrounds
Schools
Parks

AS Standards

ASTM Standards

Performance

	Dualshade 350	Dualshade 350 FR
Maximum force	warp 960 N/50mm	790 N/50mm
Elongation at max. force	warp 117%	99%
Maximum force	weft 1100 N/50mm	1200 N/50mm
Elongation at max. force	weft 70.5%	72%
Breaking force	warp 1500 N	1200 N
Breaking force	weft 1300 N	1300 N
Tear strength	warp 327 N	238 N
Tear strength	weft 245 N	180 N
Bursting Pressure	3500 kPa	3300 kPa
Bursting force	1959 N	1915 N

	Dualshade 350	Dualshade 350 FR
warp	265 lbf	196 lbf
warp	79%	79%
weft	321 lbf	286 lbf
weft	62%	71%

warp	64.4 lbf	61.4 lbf
weft	49.2 lbf	47.3 lbf
	461 lbf	383 lbf

Fabric Properties

	Dualshade 350	Dualshade 350 FR
Nominal Fabric Mass	350 gsm ± 20	350 gsm ± 20

Roll Specification

	Dualshade 350	Dualshade 350 FR
Normal Width	3.0m (folded)	3.0m (folded)
Length	40m	40m

Flammability Info

Flammability Index - 38 Ignitability Index - 14 Spread of Flame Index - 8 Heat Evolved Index - 3 Smoke Developed Index - 4	Flammability Index - 1	ASTM E84 19B Class A	CSFM Title 19 1237.1 NFPA 701 Test Methods 1&2 ASTM E84 19B Class A
--	------------------------	----------------------	--



*The results listed in this brochure are typical averages from independent testing and quality assurance testing and are not to be taken as a minimum specification nor as forming any contract between GALE Pacific and another party. Due to continuous product improvement, refer to the GALE Pacific Commercial Fabrics website for latest technical performance information.

* Please note, due to limitations of the printing process, colors pictured may not represent the true color.

¹Applicable to non-FR fabric only



Gale Pacific Limited
145 Woodlands Drive,
Braeside Victoria 3195
Toll Free: 1 800 331 521

Gale Pacific USA
285 West Central Parkway,
Ste. 1704 Altamonte
Springs, FL 32714
Toll Free: 1 800 560 4667

Gale Pacific MENA
JAFZA 15, 6th Floor, Room 604,
Jebel Ali Free Zone
Dubai, United Arab Emirates
+971 4 881 7114

Gale Pacific EURASIA
+44 7388 779124

galecommercial.com

Commercial Heavy 430



Commercial Heavy 430FR



Architectural Shade Fabric specifically engineered to withstand extreme weather conditions on large scale tension structures

Made from 100% round monofilament HDPE yarn and featuring a patented intertwining knit pattern, **Commercial Heavy 430** features superior biaxial and load bearing performance for optimum shade and tensioning endurance.

Commercial Heavy 430 offers up to 87.9% UVR Block protection and is available in 16 popular colours, making it easier than ever to complement existing design elements and colour schemes.



Desert Sand
484309
492878



Black
484422
492922



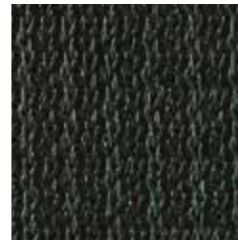
Charcoal
484460
492908



Steel Grey
484408
492854



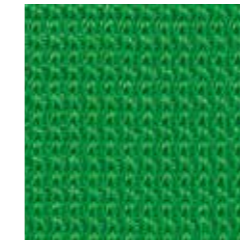
White
485863
492847



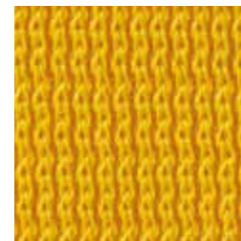
Brunswick Green
484361
492915



Emerald
485887
492946



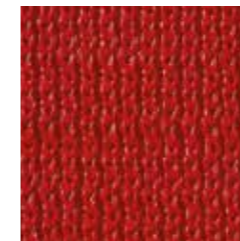
Bright Green
492779
492960



Yellow
485849
492830



Deep Ochre
484385
492885



Red
484484
492892



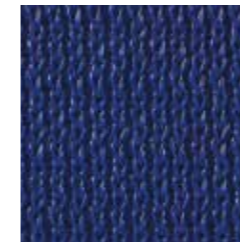
Orange
492786
492977



Natural
484347
492939



Navy Blue
484446
492861



Aquatic Blue
484323
492953



Royal Purple
492793
492984

Durability and FR compliance are now combined to create premium fabrics providing maximum performance.

GALE Pacific offers the **WIDEST RANGE of FLAME RETARDANT** knitted fabrics globally.

Our FR fabrics meet the most stringent Fire Standards for shade fabrics including CSFM 1237.1 & NFPA 701 across all colour variants with fabrics that offer optimum biaxial stability and tensile properties, for minimal maintenance and improved fabric life.



Patented intertwining knit pattern resulting in superior biaxial performance

100% round monofilament HDPE yarn for optimal structural stability

Uniform balance across the warp and weft for easy fabrication and minimal maintenance

Stentered (heat set) for prevention of shrinking and ease of fabrication

Commercial Heavy 430

Commercial Heavy 430FR

Engineered to withstand extreme weather conditions on large scale tension structures



Architectural SHADE FABRIC

Outdoor Recreation Areas
Car Park Structures
Sports Complexes

Commercial Heavy 430

Performance

Tensile Strength	warp	1 600 N/50mm
Elongation at max. force	warp	108%
Tensile Strength	weft	1400 N/50mm
Elongation at max. force	weft	165%
Wing tear (mean)	warp	503 N
Wing tear (mean)	weft	255 N
Burst force		2349 N
Burst pressure		3900 kPa

Fabric Properties

Nominal Fabric Mass	430 gsm ± 20
---------------------	--------------

Roll Specification

Width	3.0m (unfolded)
Length	40m

Flammability

AS1530.2 - Flammability Index	21
-------------------------------	----

Commercial Heavy 430FR

Performance

Tensile Strength	warp	1400 N/50mm
Elongation at max. force	warp	70%
Tensile Strength	weft	1300 N/50mm
Elongation at max. force	weft	144%
Wing tear (mean)	warp	255 N
Wing tear (mean)	weft	272 N
Burst force		1955 N
Burst pressure		3200 kPa

Fabric Properties

Nominal Fabric Mass	430 gsm ± 20
---------------------	--------------

Roll Specification

Nominal width	3.0m (unfolded)
Length	40m

Flammability

AS1530.2 - Flammability Index	1
CSFM 1237.1 #	Pass- all colours
NFPA 701 #	Pass- all colours

Contact GALE Pacific for test reports and certificates



* Oeko-Tex & Greenguard applicable to non FR products only

* The results listed in this brochure are typical averages from independent testing and quality assurance testing and are not to be taken as a minimum specification nor as forming any contract between GALE Pacific and another party. Due to continuous product improvement, refer to the GALE Pacific Commercial Fabrics website for latest technical performance information.

* Please note, due to limitations of the printing process, colours pictured may not represent the true colour.



Gale Pacific Limited
145 Woodlands Drive,
Braeside Victoria 3195
Toll Free: 1 800 331 521

Gale Pacific USA
285 West Central Parkway,
Ste. 1704 Altamonte
Springs, FL 32714
Toll Free: 1 800 560 4667

Gale Pacific MENA
JAFZA 15, 6th Floor, Room 604,
Jebel Ali Free Zone
Dubai, United Arab Emirates
+971 4 881 7114

Gale Pacific EURASIA
+44 7388 779124

galecommercial.com

SHADETEC 320[®]

SHADE FABRIC

Not CA FR Approved

ADD LIFE AND
SUPERB STYLE TO ANY
OUTDOOR AREA FOR
EXCELLENT VALUE



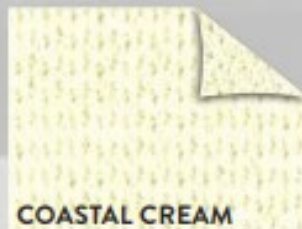
FABRIC SPECIFICATIONS

SHADETEC 320®

Shade Factor % (SF depends on colour - see below for details)	75-97 %
UVR Block %	91-95 %
Roll Width	3.7m
Roll Length	50m
Heat set to increase dimensional stability and consistency	
Abrasion resistant yarn	



SF=75%



SF=77%



SF=87%



SF=94%



SF=95%



SF=93%



SF=96%



SF=92%



SF=80%



SF=97%



SF=91%



SF=95%



SF=91%



SF=90%



Colours shown indicative only.

FEATURES

 **RECYCLABLE**

Shadetec 320® is a commercial grade shade cloth fabric manufactured from High Density Polyethylene (HDPE) monofilament and tape filament. All filament (or yarn) is lockstitch knitted together providing a very high strength fabric. Shadetec 320® is then heat set, which improves dimensional stability and consistency and ensures that the mesh will lie flat during fabrication.

Shadetec 320® is ideal for small to medium size applications where a premium grade shade fabric is required. Each colour in the range consists of single colour filaments, which provides consistent colour tone and texture throughout the entire roll.

Shadetec 320® not only offers a very high level of UV protection with 91% - 95% block, but is made from UV stabilised materials, ensuring that the fabric of your shade sails will continue to perform even after years of exposure to the elements. The super tough abrasion resistant yarn means excellent durability and longevity with great resistance to grime, mildew and dirt.

- ✓ High strength fabric
- ✓ Ideal for smaller residential shade sails
- ✓ Up to 97% shade offered
- ✓ 13 year warranty
- ✓ Stain, dirt and grime resistant
- ✓ Available in 14 colours
- ✓ Single colour filaments ensure consistent colour tone
- ✓ Eco-friendly - 100% recyclable

SHADETEC 320® fabric is covered with a 13 year UV warranty.



ENGINEERING SPECIFICATIONS



Breaking Force Warp 1224N
(AS 2001.2.3.2-2001 Grab Method)

Breaking Force Weft 1601N
(AS 2001.2.3.2-2001 Grab Method)

Elongation at Break Warp 94%

Elongation at Break Weft 50%

Bursting Force 1973N
(AS 2001.2.4 Ball Bursting Method)

Tear Strength Warp 195N
(AS 2001.2.10.C.R.E, Wing rip Tear Method)

Tear Strength Weft 247N
(AS 2001.2.10.C.R.E, Wing rip Tear Method)